

+ - 65pl.  
From 16h00

+ - 30pl.

NO PARKING



NO PARKING

14pl.

+ - 35pl.  
From 18h00 (TBC)

+ - 10pl.

15pl.

NO PARKING



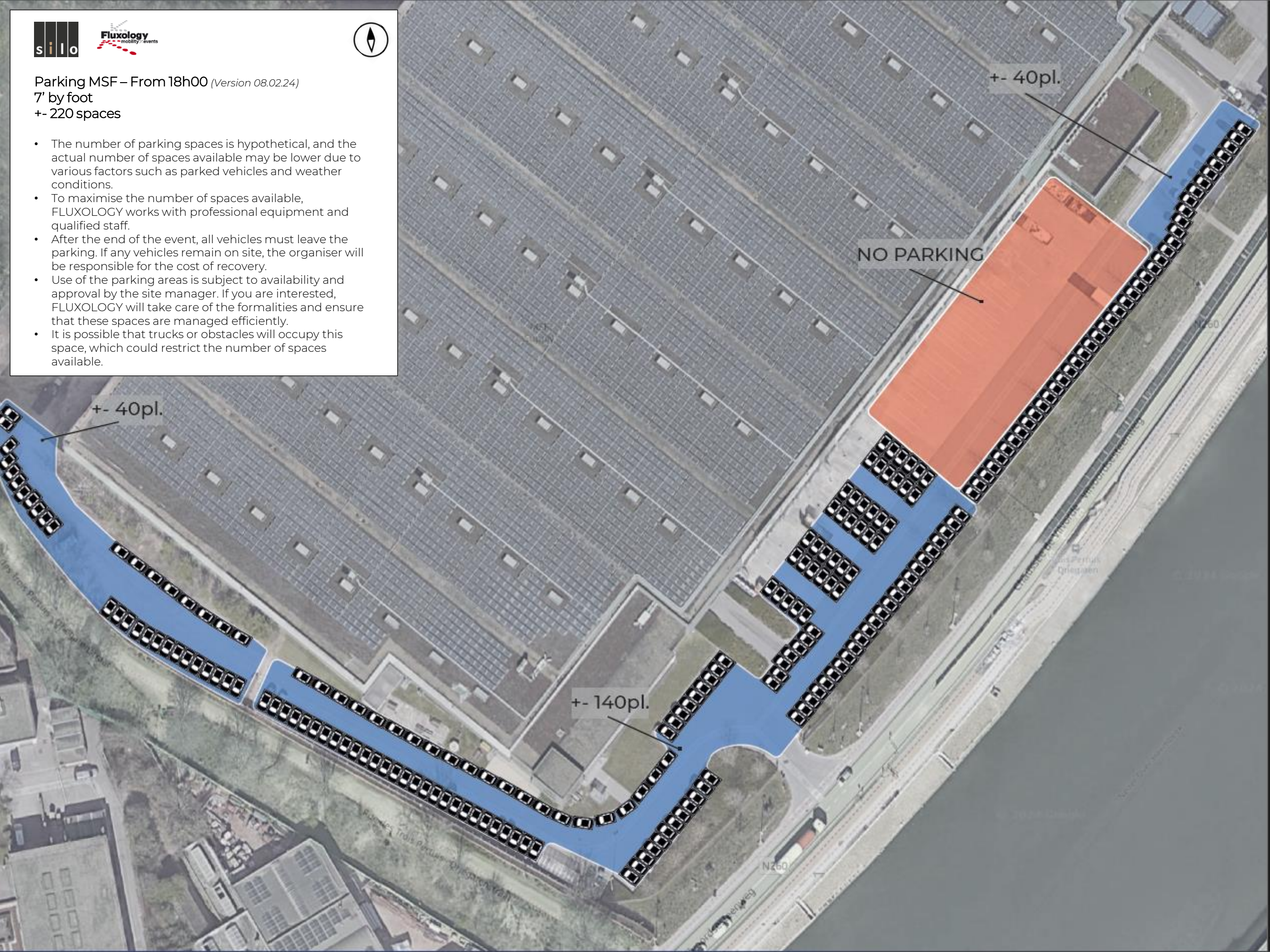
**Parking around Silo Brussels** (Version 08.02.24)  
+ - 170 spaces

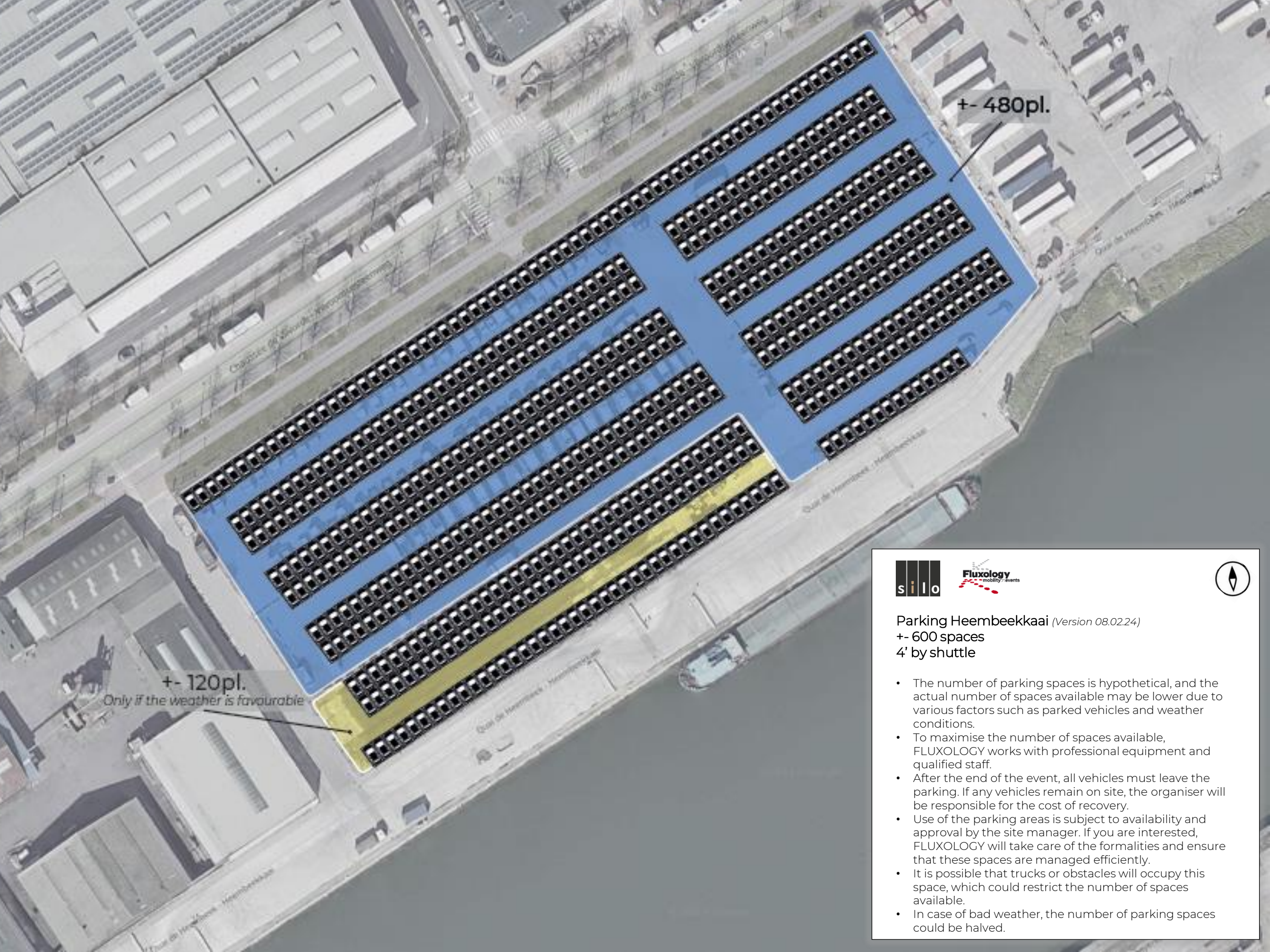
- The number of parking spaces is hypothetical, and the actual number of spaces available may be lower due to various factors such as parked vehicles and weather conditions.
- To maximise the number of spaces available, FLUXOLOGY works with professional equipment and qualified staff.
- After the end of the event, all vehicles must leave the parking. If any vehicles remain on site, the organiser will be responsible for the cost of recovery.
- Use of the parking areas is subject to availability and approval by the site manager. If you are interested, FLUXOLOGY will take care of the formalities and ensure that these spaces are managed efficiently.
- It is possible that trucks or obstacles will occupy this space, which could restrict the number of spaces available.



**Parking MSF – From 18h00** *(Version 08.02.24)*  
**7' by foot**  
**+ - 220 spaces**

- The number of parking spaces is hypothetical, and the actual number of spaces available may be lower due to various factors such as parked vehicles and weather conditions.
- To maximise the number of spaces available, FLUXOLOGY works with professional equipment and qualified staff.
- After the end of the event, all vehicles must leave the parking. If any vehicles remain on site, the organiser will be responsible for the cost of recovery.
- Use of the parking areas is subject to availability and approval by the site manager. If you are interested, FLUXOLOGY will take care of the formalities and ensure that these spaces are managed efficiently.
- It is possible that trucks or obstacles will occupy this space, which could restrict the number of spaces available.





+ - 480pl.

+ - 120pl.  
Only if the weather is favourable



**Parking Heembeekkaai** (Version 08.02.24)  
+ - 600 spaces  
4' by shuttle

- The number of parking spaces is hypothetical, and the actual number of spaces available may be lower due to various factors such as parked vehicles and weather conditions.
- To maximise the number of spaces available, FLUXOLOGY works with professional equipment and qualified staff.
- After the end of the event, all vehicles must leave the parking. If any vehicles remain on site, the organiser will be responsible for the cost of recovery.
- Use of the parking areas is subject to availability and approval by the site manager. If you are interested, FLUXOLOGY will take care of the formalities and ensure that these spaces are managed efficiently.
- It is possible that trucks or obstacles will occupy this space, which could restrict the number of spaces available.
- In case of bad weather, the number of parking spaces could be halved.



NO PARKING

NO PARKING

NO PARKING

NO PARKING

+ - 380pl.

+ - 280pl.  
From 18h00



**Parking Euroveiling** (Version 08.02.24)

+ - 660 spaces

4' by shuttle

- The number of parking spaces is hypothetical, and the actual number of spaces available may be lower due to various factors such as parked vehicles and weather conditions.
- To maximise the number of spaces available, FLUXOLOGY works with professional equipment and qualified staff.
- After the end of the event, all vehicles must leave the parking. If any vehicles remain on site, the organiser will be responsible for the cost of recovery.
- Use of the parking areas is subject to availability and approval by the site manager. If you are interested, FLUXOLOGY will take care of the formalities and ensure that these spaces are managed efficiently.
- It is possible that trucks or obstacles will occupy this space, which could restrict the number of spaces available.